



RV Aranda

CRUISE PLAN

Combine 3 Leg 2 GOF, 13/2015 17. - 19.8.2015

Description of the cruise

Monitoring of physical and biological parameters; general hydrography, temperature, salinity, dissolved oxygen, nutrients, phycotoxins, phytoplankton and zooplankton of the Baltic Sea according to HELCOM COMBINE program and monitoring of microliter in the surface waters. Experimental work on zooplankton and microplastics and zooplankton sampling with towed vehicles.

Scientific staff:

Chief scientist:	Maiju Lehtiniemi	SYKE	17.8.-19.8.2015
CTD chief:		SYKE	17.8.-19.8.2015
		SYKE	17.8.-19.8.2015
		SYKE	17.8.-19.8.2015
		SYKE	17.8.-19.8.2015
		SYKE	17.8.-19.8.2015
		SYKE	17.8.-19.8.2015
		SYKE	17.8.-19.8.2015
		SYKE	17.8.-19.8.2015
		IL	17.8.-19.8.2015
		IL	17.8.-19.8.2015
		IL	17.8.-19.8.2015
		Aeromon	17.8.-19.8.2015
		NatMIRC, Namibia	17.8.-19.8.2015
		UG, Poland	17.8.-19.8.2015
			17.8.-19.8.2015

Altogether 16 persons in scientific staff.

Departure from: HELSINKI
Departure time: Monday 17.08.2015 at 12:00

Cruising speed: 10,0 knots
Average station time: 2 h.

Arrival to: HELSINKI
Arrival time: Wednesday 19.08.2015 at 21:52

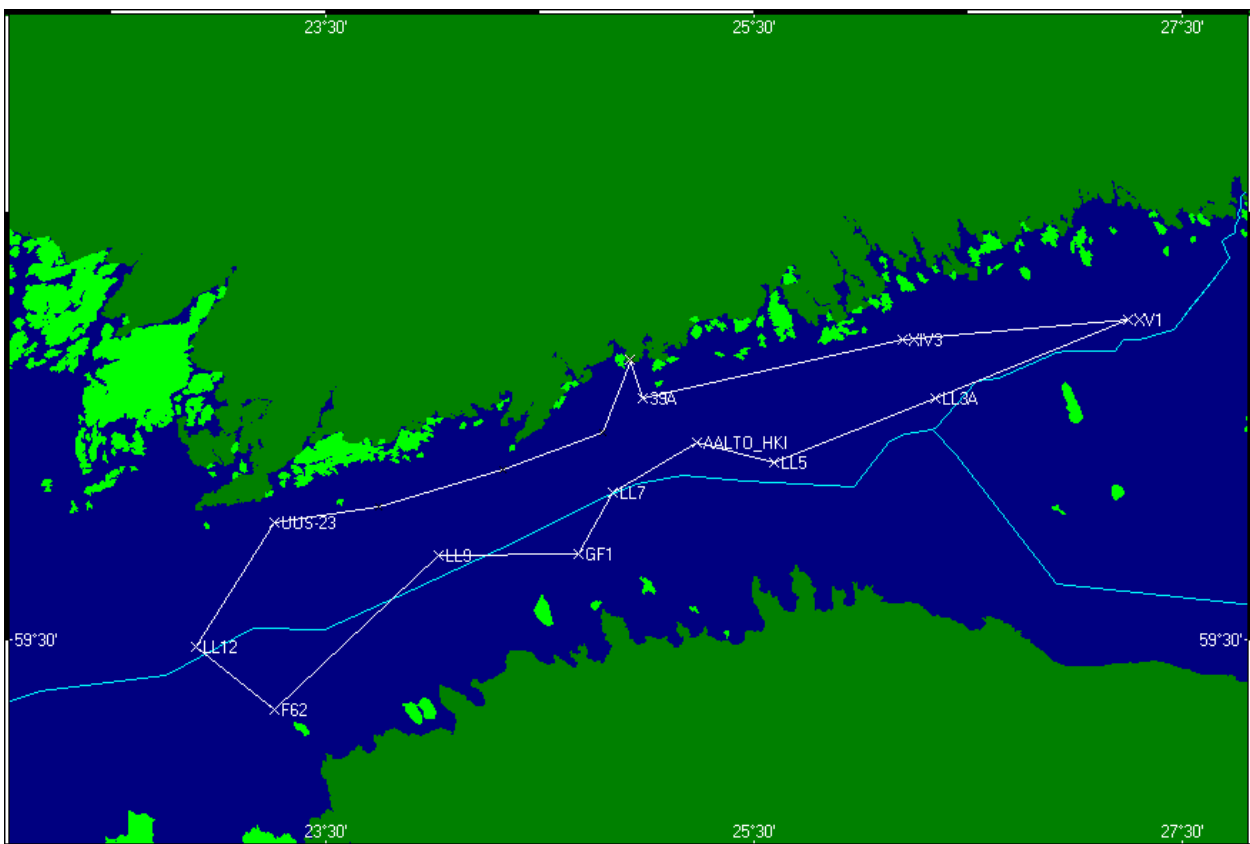
Duration of the cruise: 2 days 9 h 52 min
Length of the cruise: 308,69 nautical miles
Number of stations 12. Points with name "P" are just route points without observations.

Route:

Nro	Station	Lat.	Long.	Depth [m]	hh:mm	Arrival dy	dd.mm.yyyy	Durat. hh:mm	Speed knots
0	HELSINKI	60°09.55'	24°55.37'	0	12:00	Mo	17.08.2015	0:00	S 10,0

1	39A	60°04.01'	24°58.81'	41	12:34	Mo	17.08.2015	1:00	S	10,0
2	XIV3	60°12.19'	26°11.57'	77	17:17	Mo	17.08.2015	2:00	S	10,0
3	XV1	60°15.00'	27°14.82'	64	22:26	Mo	17.08.2015	2:00	S	10,0
4	LL3A	60°04.03'	26°20.80'	68	03:21	Tu	18.08.2015	3:00	S	10,0
5	LL5	59°55.01'	25°35.82'	70	08:46	Tu	18.08.2015	2:00	S	10,0
6	AALTO_HKI	59°57.90'	25°14.10'	62	11:54	Tu	18.08.2015	2:00	S	10,0
7	LL7	59°50.79'	24°50.27'	100	15:17	Tu	18.08.2015	3:30	S	10,0
8	GF1	59°42.30'	24°40.93'	84	19:45	Tu	18.08.2015	2:00	S	10,0
9	LL9	59°42.01'	24°01.81'	69	23:44	Tu	18.08.2015	2:30	S	10,0
10	F62	59°20.01'	23°15.81'	95	05:26	We	19.08.2015	2:00	S	10,0
11	LL12	59°29.01'	22°53.81'	82	08:52	We	19.08.2015	2:00	S	10,0
12	UUS-23	59°46.61'	23°15.77'	60	12:57	We	19.08.2015	3:00	S	10,0
13	P	59°48.87'	23°44.84'	-	17:26	We	19.08.2015	0:00	S	10,0
14	P	59°54.10'	24°19.65'	-	19:15	We	19.08.2015	0:00	S	10,0
15	P	59°59.31'	24°47.66'	-	20:45	We	19.08.2015	0:00	S	10,0
16	P	60°09.49'	24°55.66'	-	21:51	We	19.08.2015	0:00	S	10,0
17	HELSINKI	60°09.55'	24°55.37'	0	21:52	We	19.08.2015	0:00	S	10,0

Route map:



Cruise plan is printed at 01.06.2015 a 12:23.